

# GTR™ 230

Accessible power and performance.



Eclipse Black / Reef Blue

Rotax® 1630 ACE™ - 230

GTI™ Hull

BRP Audio - premium system (optional)

CAPACITY	
Rider capacity	3
Weight capacity	273 kg
Fuel capacity	70 L
Glove box	8.8 L
Front bin	144 L
Storage capacity - Total	152.8 L

DIMENSIONS	
Length (bumper to bumper)	332 cm
Width	125 cm
Height	114 cm

HULL	
Type	GTI™ Hull
Material	Polytec™

OTHER FEATURES	
<ul style="list-style-type: none"><li>Ergolock™ two-piece touring seat</li><li>Seat strap</li><li>iBR® - Intelligent Brake &amp; Reverse</li><li>VTS™ (Variable Trim System)</li><li>RF D.E.S.S.™ key</li><li>Watertight phone compartment</li><li>LinQ™ attachment system</li></ul>	<ul style="list-style-type: none"><li>BRP Audio - premium system (optional)</li><li>Wide-angle mirrors</li><li>Handle Grips with palm rest</li><li>Footwell carpets</li><li>Large swim platform</li><li>Tow hook</li></ul>

ROTAX ENGINE	1630 ACE™ - 230
Displacement	1,630 cc
Power (hp)	230 hp
Intake system	Supercharged with external intercooler
Cooling	Closed-Loop Cooling System (CLCS)
Reverse system	Electronic iBR*
Starter	Electric
Fuel type	95 octane
Throttle system	iTC™ (Intelligent Throttle Control)
Exhaust System	D-Sea-Bel™ system

GAUGE	
Type of gauge	4.5" digital display
Main functions	<ul style="list-style-type: none"><li>Speedometer</li><li>RPM</li><li>Clock</li><li>VTS™</li><li>Fuel autonomy</li><li>Vehicle hours</li></ul>
iTC System - mode	<ul style="list-style-type: none"><li>Sport mode</li><li>ECO® mode</li><li>Slow mode</li><li>Speed regulator</li></ul>

WEIGHT	
Dry weight (oil, coolant, no fuel)	352 kg
Power to weight ratio (HP / Kg)	0.65

WARRANTY	
BRP limited warranty covers the watercraft for two years.	

\*Electronic brake, neutral and reverse.

KEY FEATURES

- Rotax® 1630 ACE™ - 230
- GTI™ Hull
- Variable Trim System (VTS™)
- Large front storage
- Watertight phone compartment
- LinQ™ attachment system



Eclipse Black and Reef Blue



**BRP Audio - Premium System (optional)**

A truly waterproof Bluetooth® audio system for an extra dose of fun and entertainment on the water.



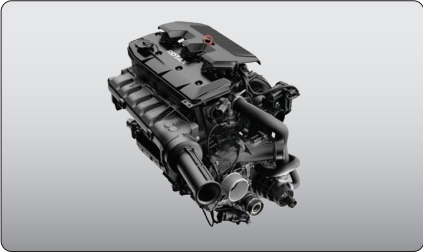
**VTS™ (Variable Trim System)**

Provides handlebar-activated settings so riders can easily find the ideal trim for varying conditions.



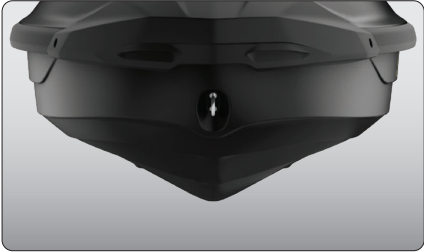
**Swim platform with Integrated LinQ™ System**

Exclusive quick-attach system on the largest swim platform in the industry that allows for easy installation of accessories.



**ROTAX® 1630 ACE™ - 230 ENGINE**

This powerful engine comes standard with a supercharger and external intercooler. It is optimised to run on regular fuel, which lowers fuel costs.



**GTI™ Hull**

This moderate V-shaped hull guarantees a stable, enjoyable ride in variable water conditions. Confident, predictable handling but incredibly playful when you want it to be.



**Large front storage**

An impressive 144 L. of sealed storage space allows riders to safely stow belongings while riding.

\*Bluetooth® is a registered trademark owned by Bluetooth® SIG, Inc. and any use of such trademarks by BRP is under license.