

RXP-X[®] RS 325

Race-ready performance watercraft, reimagined.



- NEW Gulfstream Blue Premium
- Ice Metal / Manta Green

Rotax[®] 1630 ACE[™] - 325

T3-R[™] Hull

Launch control

CAPACITY	
Rider capacity	1 (up to 2 riders with passenger accessory seat)
Weight capacity	182 kg
Fuel capacity	70 L
Glove box	9.7 L
Front bin	143 L
Storage capacity - Total	153.7 L

DIMENSIONS	
Length (bumper to bumper)	332 cm
Width	125 cm
Height	111 cm

HULL	
Type	T3-R [™] Hull
Material	Fiberglass

OTHER FEATURES	
<ul style="list-style-type: none">Ergolock[™] R racing seatiBR[®] - Intelligent Brake & ReverseExtended VTS[™] (Variable Trim System)RF D.E.S.S.[™] keyLarge front storageWatertight phone compartmentLinQ[™] attachment systemBRP Audio - premium system (standard with Gulfstream Blue Premium, optional on Ice Metal / Manta Green)Wide-angle mirrors	<ul style="list-style-type: none">Round handle gripsFootwell carpetsLarge swim platformStainless Polished impellerUSB port (standard on Gulfstream Blue Premium, optional on Ice Metal / Manta Green)X-sponsonsDouble-angled footwell wedgesHydraulic steering damperCarbon fiber hoodLow-rise racing handlebarsTow hook

ROTAX ENGINE	1630 ACE [™] - 325
Displacement	1,630 cc
Power (hp)	325 hp
Intake system	Supercharged with external intercooler
Cooling	Closed-Loop Cooling System (CLCS)
Reverse system	Electronic iBR [®] *
Starter	Electric
Fuel type	98 octane
Throttle system	iTC [™] (Intelligent Throttle Control)
Exhaust System	D-Sea-Bel [™] system

GAUGE	
Type of gauge	7.6" wide digital display (on Ice Blue / Manta Green), 10.25" in. touchscreen display with BRP Connect (on Gulfstream Blue Premium)
Main functions	<ul style="list-style-type: none">BRP Connect (standard with Gulfstream Blue Premium)Music (standard with Gulfstream Blue Premium)Navigation (standard with Gulfstream Blue Premium)Bluetooth[†] connectivity (standard with Gulfstream Blue Premium)SpeedometerRPMClockExtended VTS[™] (standard with Gulfstream Blue Premium)Fuel consumption (standard with Gulfstream Blue Premium)Fuel autonomyTop speed and average speedVehicle hours
iTC System - mode	<ul style="list-style-type: none">Sport modeECO[®] modeSlow modeSpeed regulatorLaunch control

WEIGHT	
Dry weight (oil, coolant, no fuel)	353 kg
Power to weight ratio (HP / Kg)	0.92

WARRANTY	
BRP limited warranty covers the watercraft for two years.	

*Electronic brake, neutral and reverse.
†Bluetooth[™] is a registered trademark owned by Bluetooth[®] SIG, Inc. and any use of such trademarks by BRP is under license.

WHAT'S NEW

- 10.25 in. touchscreen display with BRP Connect (standard with Gulfstream Blue Premium)

KEY FEATURES

- Rotax® 1630 ACE™ - 325
- T3-R™ Hull
- Launch control
- Ergolock™ R racing seat
- Low-rise racing handlebar
- Double-angled footwell wedges
- X-sponsons
- Stainless Polished Impeller
- Carbon fiber hood
- Hydraulic steering damper
- Tech Package (on Gulfstream Blue Premium model): BRP Audio - premium system, 10.25 in. touchscreen display with BRP Connect and USB Port



● NEW Gulfstream Blue Premium



● Ice Metal and Manta Green



ROTAX® 1630 ACE™ - 325 ENGINE

The Rotax® 1630 ACE™-325 is the industry's most powerful PWC engine from factory. With its 325hp, this engine delivers incredible acceleration and power thanks to innovative engineering for uncompromised offshore performance.



Hydraulic Steering Damper

3 steering positions to quickly control the stiffness. It adds riding precision by removing undesired input in rougher conditions. It provides a premium feeling and improved control to the rider.



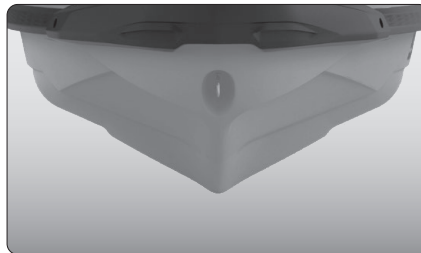
Tech Package with 10.25" Touchscreen Display (on Gulfstream Blue Premium model)

Levels up entertainment and connectivity on the water. It includes a factory-installed, truly waterproof Bluetooth® audio system, a 10.25" touchscreen display with BRP Connect and a usb port.



Ergolock™ R system

A narrow seat profile with deep knee pockets and a revolutionary adjustable saddle that allows riders to lock in to the machine like never before.



T3-R™ Hull

A deep-V design that offers unrivaled handling and acceleration and a new level of control at high speed.



Large front storage

An impressive 144 L. of sealed storage space allows riders to safely stow belongings while riding.